

Attention: Nexus Firearms strongly recommends the use of an aftermarket extended charging handle. The delay system makes the weapon slightly harder to charge, due to the Bolts positive lockup with the beach face.

If you have any questions at all about your product regarding installation or otherwise, please feel free to reach out to Info@nexusfirearms.com

1. Strip all reused parts from factory CZ Scorpion & inventory parts needed before you begin. This includes but is not limited to:
 - 1.1. Complete Bolt Assembly
 - 1.2. Complete Trigger Pack (CZ Lower)
 - 1.3. Barrel
 - 1.4. Hand Guard
 - 1.5. Charging Handle
 - 1.6. Pistol Grip
2. Open Nexus Receiver & lay out parts for assembly. The base Nexus Receiver includes:
 - 2.1. Nexus Evo Gen 1 Receiver
 - 2.2. Barrel Locking Block
 - 2.3. T27 Plus Clamp Bolts QTY. 2
 - 2.4. T27P L-key
3. Install **Barrel**
 - 3.1. Slide barrel into the Nexus Receiver as shown in PHOTO 1.
 - 3.2. Pay close attention to barrel orientation. Incorrect orientation will cause assembly problems later. (You may need to be lightly tap with a soft face mallet in order to fully seat into place)



Note: This guide is intended for use by certified gunsmiths. Nexus Firearms does not recommend user installation.

4. Install **Barrel Locking Block**

- 4.1. Place Barrel Locking Block in the correct orientation. See engraving on block for proper orientation. (Photo 2)
- 4.2. Sufficiently tighten the T27P Clamp Bolts. (You may need to be lightly tap with a soft face mallet in order to fully seat into place)
 - 4.2.1. Torque specifications are unavailable at this time because they change based on the different brands of barrel used. The Locking Block should be bottomed out on the receiver. (Photo 3)



5. Installation of **Handguards***. This assembly is shown with the HBI 6.84" angled handguard. This step will vary if you have opted to use a handguard from another manufacturer.

- 5.1. Install handguard trunnion over barrel with the rectangular boss facing the receiver. (Photo 4)
 - 5.1.1. Due to tight tolerances this often needs to be tapped into place with a small soft face hammer until fully seated.
- 5.2. Tighten clamp screws (T25) to manufacture spec. (Photo 5)
 - 5.2.1. High temp Loctite may be applied at this step but is not required.
- 5.3. Slide the handguard in place & tighten the 4 (T25) screws. We suggest using Blue Loctite for these screws (Photo 6&7)



Note: This guide is intended for use by certified gunsmiths. Nexus Firearms does not recommend user installation.



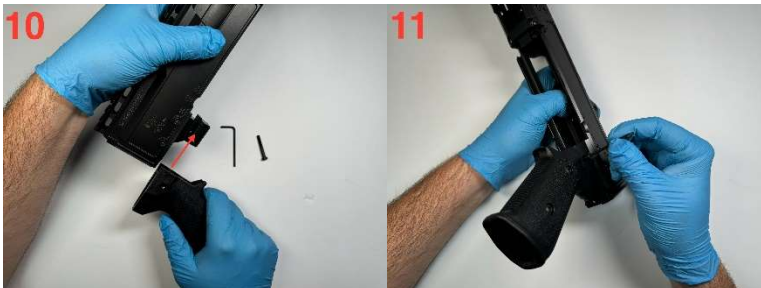
6. Install **Charging Handle**

- 6.1. Slide Charging Handle into handguard from the front side. (Photo 8)
- 6.2. Insert hand guard retaining pin. (Photo 9)



7. Install **Pistol Grip**

- 7.1. Slide pistol grip onto receiver (Photo 10)
- 7.2. Insert & tighten grip screw using an Allen Key (2.5mm) (Photo 11)



8. Installation of **Bolt Assembly**

- 8.1. Push charging handle to forward most position
- 8.2. Insert Bolt Assembly into the receiver. Bolt is fully seated when the bolt face and chamber faces are touching (Photo 12)

Note: This guide is intended for use by certified gunsmiths. Nexus Firearms does not recommend user installation.



9. Install Complete **Trigger Pack** (The lower)
 - 9.1. Charge the bolt & lock to rear of the receiver using the charging handle
(Photo 13)
 - 9.2. Insert Trigger Pack into the receiver and press the retaining pin into place.
(Photo 14)
 - 9.2.1. When installing a 3+ trigger pack the fitment may be snug. This is to be expected.



10. Complete full **Function Check** of weapon system
 - 10.1. Make sure Bolt cycles smoothly.
 - 10.1.1. This will feel different than a factory receiver because the Bolt will now be slightly harder to charge in the beginning of travel due to the delay system.
 - 10.2. Check trigger function & reset
 - 10.3. Make sure the bolt catch engages with an empty magazine inserted.
11. Lubing / Break-In
 - 11.1. Keep the bolt and inside of the receiver well lubricated for the first 200 rounds for the most optimal break-in. You can also lubricate the bearing system from the exterior of the firearm through the small holes on each side of the receiver. This should be done every 1000 - 2000 rounds or every time you clean the firearm and will greatly increase the life of the bearings.

Note: This guide is intended for use by certified gunsmiths. Nexus Firearms does not recommend user installation.