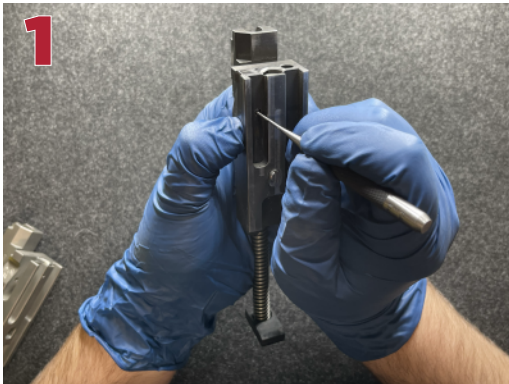


Note: This guide is intended for use only by certified gunsmiths. Nexus Firearms does not recommend self installation of this product.

### OEM Bolt Disassembly

Required Tools:  
1/16" Punch Hammer Paperclip

1. While pressing in and holding the extractor, use the 1/16" punch to push out the extractor retaining pin. (Image 1)
2. Remove the extractor and extractor spring. (Image 2)
3. While pressing in and holding the back of the firing pin, use the 1/16" punch to push the cross retaining pin out of the extractor pocket. Continue to hold the firing pin. (Image 3)
4. While still holding the firing pin, press down on the striker block. Slowly release the firing pin, removing the firing pin and spring from the hole. (Images 4 & 5)
5. Flip the bolt over to allow the striker block and striker block spring to fall from the hole. (Image 6)





Note: This guide is intended for use only by certified gunsmiths. Nexus Firearms does not recommend self installation of this product.

### OEM Bolt Disassembly

Required Tools:

1/16" Punch    Hammer    Paperclip

6. Fully compress the recoil spring and guide rod. Once compressed, insert the paperclip into the retaining hole. (Images 7 & 8)
7. Lay the bolt on one side and use the 1/16" punch and hammer to remove the retaining pin holding the locking stud in place. (Image 9)
8. Remove the locking stud and set aside. (Image 10)
9. Carefully compress the recoil spring and guide rod once again, and remove the paperclip. Slowly release compression, and remove the recoil spring and guide rod. (Image 11)
10. Remove the washer from the guide rod hole. (Image 12)





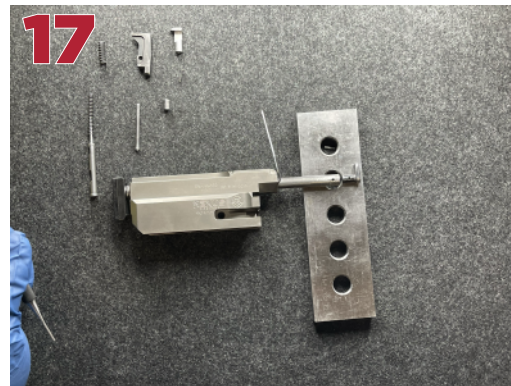
Note: This guide is intended for use only by certified gunsmiths. Nexus Firearms does not recommend self installation of this product.

### Enhanced Bolt Assembly

Required Tools:

1/16" Punch    Hammer    Paperclip

1. Place washer into guide rod hole. (Image 13)
2. Insert recoil spring and guide rod into the guide rod hole. (Image 14)
3. Fully compress the guide rod and guide rod spring. Once compressed, insert the paperclip into the retaining hole. (Images 15 & 16)
4. Insert the locking stud into the end of the guide rod, paying close attention to the orientation in the photo below. Use the 1/16" punch and hammer to insert the locking stud retaining pin. (Images 17 & 18)



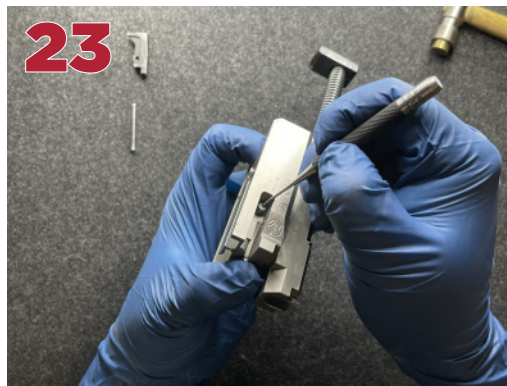


Note: This guide is intended for use only by certified gunsmiths. Nexus Firearms does not recommend self installation of this product.

### Enhanced Bolt Assembly

Required Tools:  
1/16" Punch    Hammer    Paperclip

5. Compress the guide rod and recoil spring and remove the paperclip. Carefully let the spring decompress. (Image 19)
6. Place the striker block spring into the striker block, and place them both into the striker block hole. Take extra care to ensure the striker block spring stays properly inside the striker block while placing the striker block into the striker block hole. (Image 20)
7. Depress the striker block and insert the firing pin and firing pin spring. Pay close attention to the orientation of the firing pin in the photo below. (Image 21)
8. After insertion of the firing pin, retain pressure on the back of the firing pin and insert the cross retaining pin into the extractor pocket. Use the 1/16" punch to fully seat the pin into the bottom of the hole. (Images 22 & 23)
9. Once completed, ensure proper protrusion of the striker block and perform a function test. (Image 24)



Note: This guide is intended for use only by certified gunsmiths. Nexus Firearms does not recommend self installation of this product.

### Enhanced Bolt Assembly

Required Tools:

1/16" Punch    Hammer    Paperclip

10. Place the extractor spring into the cross retaining pin hole, letting the spring rest on the cross retaining pin. Install the extractor. (Image 25)
11. While keeping pressure on the extractor, line up the extractor retaining pin holes and install the extractor retaining pin through the top of the bolt. (Image 26)
12. Use the 1/16" punch to fully seat the extractor retaining pin. Inspect the bottom of the bolt to ensure the retaining pin is flush with the bottom of the hole. (Image 27)

